

Accessory kit



Item	Qty	Description
1	1	ISO 20 Tool holder
2	1	ER 16 Collet - 4mm diameter
3	1	3mm End mill 3mm shank
4	1	1/8" End mill 1/8" shank
5	1	Tool holder wrench - 30mm
6	1	5mm x 20mm Fuse
7	1	Allen wrenches, set of 6
8	1	CNCBase control software
9	1	Open-ended wrenches, set of 3
10	1	Tool holder nut wrench
11	2	Step block
12	2	Step clamp
13	2	Hex-head nut
14	2	Threaded shank
15	2	T-nut
16	2	Electrical panel keys
17	1	Ethernet cable

Technical Support:

Phone (800) 221-2763
 Fax (603) 625-2137
 Email support@intelitek.com
 Web www.intelitek.com



- Before contacting intelitek** make sure you have the following information:
- The product serial number located on the rear of the machine
 - The name of the owner of the product
 - Your computer specifications / documentation
 - Notes on any Control Program error messages
 - Access to the hardware and software components of your system

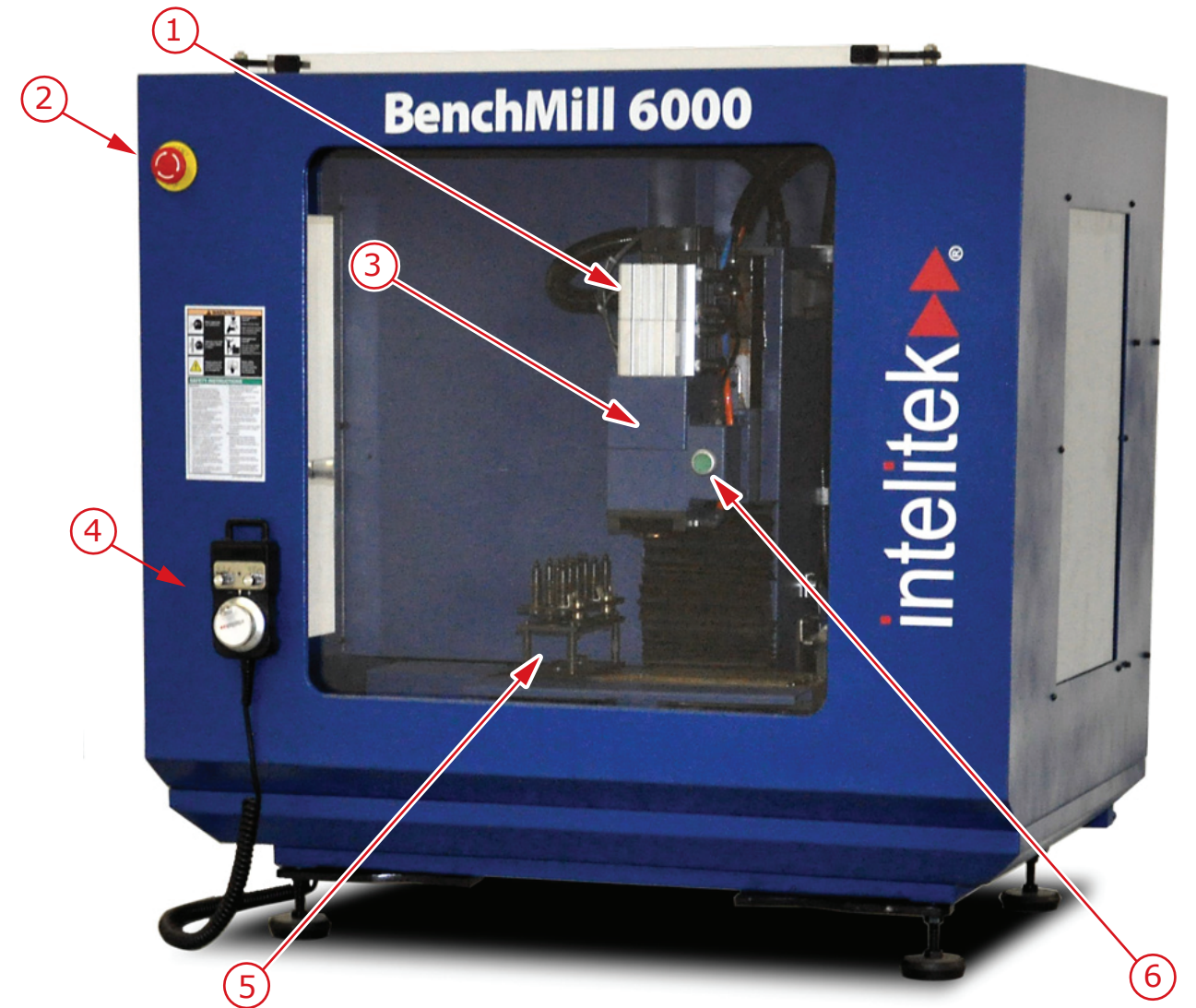
34-0000-6000 Rev-D



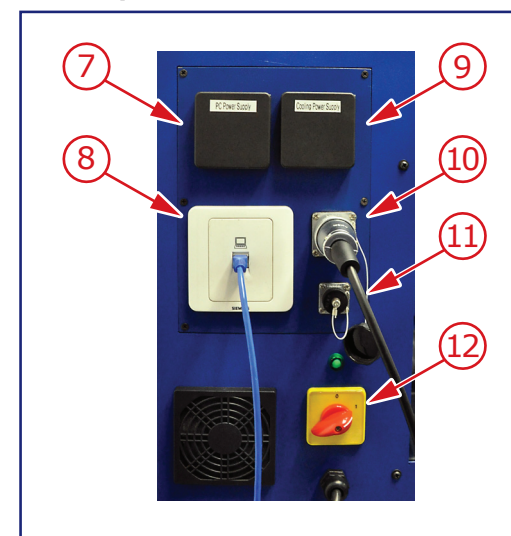
444 East Industrial Park Dr. • Manchester, NH 03109
 Phone: 800-221-2763 • info@intelitek.com
 www.intelitek.com

BenchMill 6000

Machining Center



Left side panel



Machine components

Item #	Description
1	Spindle motor
2	Emergency stop button
3	Spindle head
4	Jog pendant (optional)
5	4-tool ATC (optional)
6	Pneumatic drawbar
7	PC power supply
8	Ethernet port
9	Coolant power supply
10	Jog pendant port
11	Fanuc panel port
12	On/Off switch



Step 1 Unpack the Machining Center

- 1 Remove the crating:

CAUTION
Hold the crate components securely when removing them so that they do not strike or damage the machine.

- Cut any banding on the outside of the crate.
- Remove the top of the crate.
- Remove the sides of the crate.

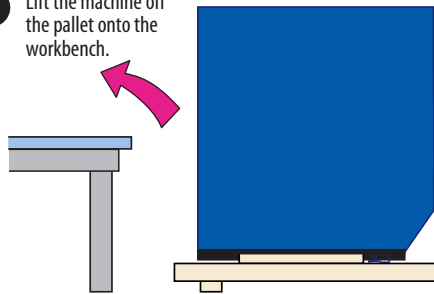
- 2 Remove the 4 shipping bolts that hold the machine to the pallet.

CAUTION
Lifting hazard!
Machine weighs approximately 400 lbs. Failure to lift properly may result in injury.

If possible, use mechanical means, such as a forklift, to lift the machine.
If no mechanical lift is available use four people to lift the machine by the carrying handles. Use proper lifting techniques.

400 lbs.

- 3 Lift the machine off the pallet onto the workbench.



To lift manually:

- Position the machine table or workbench next to the machine.
- Turn the 4 lift handles out.
- With one person on each corner of the machine, carefully lift the machine by the lift handles onto the workbench.
- Spin the 4 handles back underneath the enclosure

- 4 Manually lift the front door and remove the components from the enclosure.

NOTE:
Do not remove the wood supporting the spindle.

Step 2 Connect the Machine

CAUTION

Connect power to the machine first.

If you connect the air to the machine with the power off the door will open.

- 1 **Connect to power:** Plug the power cord on the left side of the machine into your facility electrical power.

CAUTION

Avoid injury or damage to equipment!

Turn off the supply of pressurized air at the source, or at a shutoff valve between the source and the machine before connecting the air lines to the machine.

- 2 **Connect to air:** Open the pneumatic cabinet on the back of the machine and connect the machine to your air supply.

NOTE:

The method for connecting pressurized air may vary depending on your facility. Consult the appropriate facility personnel if you are unsure how to connect your machine to your air supply.

- 3 **Connect to Ethernet:** Connect the provided Ethernet cable to your computer's Ethernet port and to the CNC machine's Ethernet port.

CAUTION

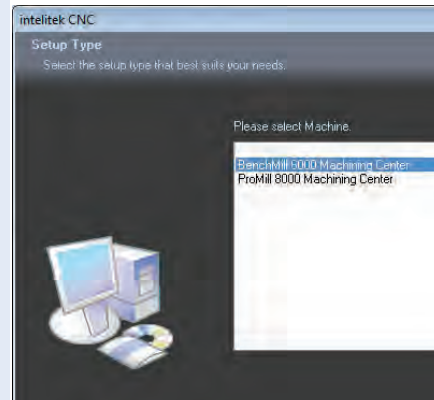
Avoid damage to equipment!

Do not connect the CNC machine to the Ethernet through a router or network switch. Connect the machine directly to the computer's Ethernet port.

Step 3 Install the Software

Install the software:

1. Insert the installation CD into the computer's CD drive.
2. Select Start > Computer and navigate to the Install folder on the CD drive.
3. Double click on the iCNC.exe file to start the installation.
4. When prompted, choose iCNCBase for intelitek CNC.



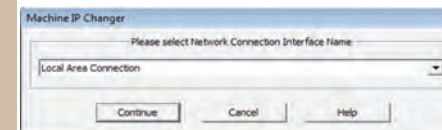
5. Follow the on-screen instructions.
6. Restart your computer.

Step 4 Configure the IP Address

NOTE:

You must have administrator access to run the Machine IP Changer utility.

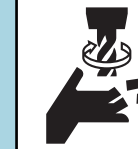
1. Run the Machine IP Configuration utility:
From the desktop, click Start / CNC Base for Intelitek CNC / Machine IP Configuration.
2. From the dropdown list, select the local area network or network card that you wish to use for the CNC machine then click Continue.



3. When prompted, click Yes to confirm the IP setting. The utility automatically changes your IP address to a static one, allowing iCNC to communicate with the machine.
When the process is finished, Machine IP Changer displays the configuration for all active network connections.
4. Press OK to complete the IP address configuration.

Step 5 Install the Tool

Install the tool in the tool holder:



WARNING

Rotating cutter hazard!

- Handle cutting tools carefully:
- Wear gloves when handling tools.
 - Handle the tool and holder by the shank.

- 1 Remove the tool holder cap from the ISO 20 tool holder.



- 2 Insert the ER 16 collet into the tool holder cap until it snaps into place.



- 3 Thread the tool holder cap onto the tool holder. Do not fully tighten.



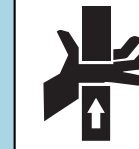
- 4 Insert the tool into the collet. Be sure the tool is fully seated in the tool holder.



- 5 Fully tighten the tool holder cap using the tool holder nut wrench while securing the tool holder with a 3/4" wrench.



Install the holder in the spindle:



WARNING

Pinch hazard! Avoid injury!

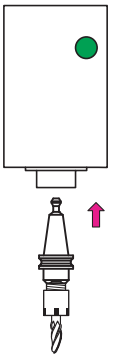
- The machine uses considerable force to hold the tool holder in the spindle.
Do not allow your fingers to be caught between the tool holder and the

- 1 With the iCNC software running, open the CNC machine door by pressing the Door Open button.



- 2 While holding the tool by the bottom of the tool holder, press the green drawbar button on the spindle and insert the tool holder into the spindle.

The tool should be sucked into the spindle.



- 3 Release the drawbar button.

Ensure the tool is installed correctly by holding the tool by the flange of the tool holder and turning the tool and spindle. Check to ensure the tool and spindle spin concentrically.